



Growth and Excellence, Every Day

19th April 2024

Issue: 24

Welcome to our first newsletter of the summer term.

I hope that you all had a wonderfully relaxing Easter break!

Sharing all the wonderful things that our children have been experiencing, since returning back from the Easter holidays, has been brilliant!

It makes me realise why Cherry Tree is such a unique place to work, teach and lead.

This week, we have had visits to Castleford College - our year 5 and 6 pupils experiencing a vocational curriculum from story telling in nurseries to mechanics.

Our year 2 pupil have also visited the local residential home – Willow Park – to work with residents who had exotic animals visit!

Last week, we surprisingly received a letter from Ofsted congratulating the school on a positive report.

Thank you for all of your support and have a great weekend!

Mr Dawson - Headteacher

Term Dates - 2023/24

Autumn Term 2023

Holiday starts - Monday 30 October 2023
Back to school - Monday 6 November 2023

Spring half term 2024

Holiday starts - Monday 12 February 2024
Back to school - Monday 19 February 2024

Easter

Holiday starts - Monday 25 March 2024
Back to school - Monday 8 April 2024

Christmas

Holiday starts - Monday 25 December 2023
Back to school - Monday 8 January 2024

Summer half term

Holiday starts - Tuesday 28 May 2024
Back to school - Monday 3 June 2024

School closes for the summer break on Thursday 18th July 2024.

Bank holidays 2023/24

Summer Bank Holiday - Monday 28 August 2023
Boxing Day - Tuesday 26 December 2023
Christmas Day (substitute day) - Monday 25 December 2023
New Year's Day (substitute day) - Monday 1 January 2024
Good Friday - Friday 29 March 2024
Easter Monday - Monday 1 April 2024
May Day - Monday 6 May 2024
Spring Bank Holiday - Monday 27 May 2024

Inset Days (subject to change):

Friday 24th May 2024

Friday 19th July 2024

Monday 22nd July 2024

Designated Safeguarding Lead: Mr A Dawson Deputy DSL: Mrs S Wiggins, Mr P Wright, Ms K King and Mrs P Millard.

If you are worried a child is at risk of harm, please contact one of the above or Social Care Direct on 0345 8503503 Copies of the Safeguarding Policy can be obtained from the school office or downloaded from the school website. <https://cherrytreeacademy.org/safeguarding/>

Attendance 19/4/24

Dibdale (Reception)	88%
Mossdale (Reception/Year 1)	87%
Rosedale (Year 1/2)	93%
Wensleydale (Year 2)	92%
Swaledale (Year 3 / 4)	83%
Silverdale (Year 3 / 4)	95%
Ribblesdale (Year 5)	90%
Wharfedale (Year 5/6)	93%
Cragdale (Year 6)	97%

Every School Day Counts



Every Minute Counts

LATENESS = LOST LEARNING
(Figures below are calculated over a school year)

5 Minutes late each day	3 days lost!
10 Minutes late each day	6.5 days lost!
15 Minutes late each day	10 days lost!
20 Minutes late each day	13 days lost!
30 Minutes late each day	19 days lost!

**Be at the
classroom on
time and ready to
learn!**

Cherry Tree Stars of the Week

Dibdale

Elvis Chibaya
Phoebe Moore

Mossdale

Logan Martin
Harper
Wrigglesworth

Rosedale

Ollie Chester
Kaysha Cundall

Wensleydale

Bella Wilkinson
Summer Whitham

Swaledale

Layla Newsome
Lucas Ashton

Silverdale

Alfie Bryan
Joe Howard

Ribblesdale

Aaron Scholey
Scarlett Parfitt

Wharfedale

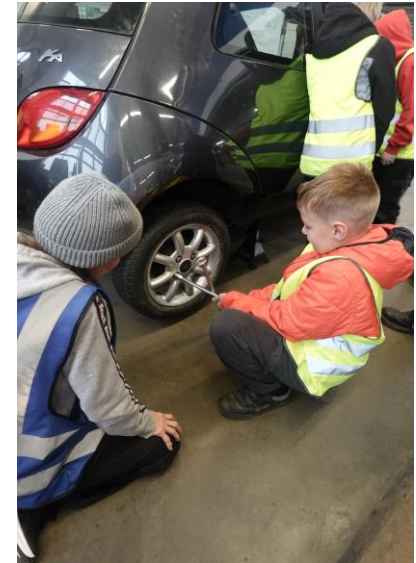
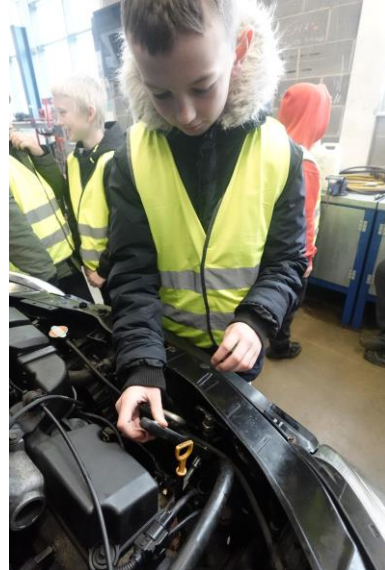
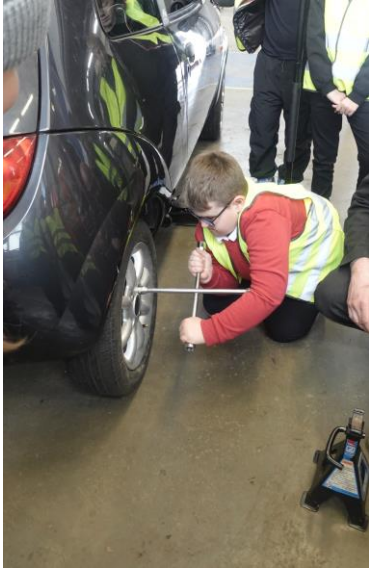
Alfie Roebuck-
Close
Harrison Anderson

Cragdale

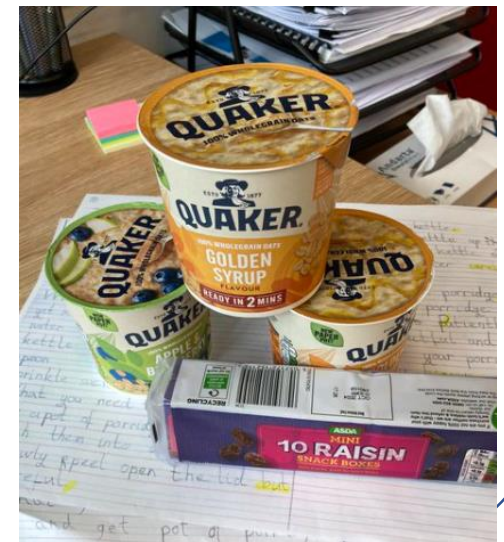
Jana Mostova
Jayden Jeyi



This Week in Pictures



This Week in Pictures



Staffing Update...

Following a thorough and extensive recruitment process, I am delighted to announce that Mrs Stacey Cannon will be joining Cherry Tree Academy as Deputy Headteacher.

Mrs Cannon will officially take up her post on Monday 3rd June.

Mrs Cannon has extensive knowledge and skills around leadership, teaching, learning and the curriculum. She joins Cherry Tree Academy from a school in Selby.

I am sure that when you see Mrs Cannon you welcome her to our Cherry Tree family.



Summer Term planning...

Over the next few weeks, will be releasing our summer term diary dates including sports day and transition (meet your new teacher).

We have three inset days booked in for this term. They are:

Friday 24th May 2024
Friday 19th July 2024
Monday 22nd July 2024

On these days, school will be closed to children.



Meet the Headteacher...

- Mr Dawson will be available to meet with parents, from any class, to discuss things that are going well and take questions from parents and carers.
- If you are interested in meeting with Mr Dawson, please contact Mrs Hayes, in the school office.
- An appointment, in person or via the telephone will be arranged.
- Parent views are vital to our school success.



Parking Request

The council have brought in restrictions on the section of Cobblers Lane that runs in front of our school and Holy Family.

The restrictions are legally binding.

Despite this, on the last visit by West Yorkshire Police, they spoke to 20-30 drivers who were not adhering to the restrictions.

To clarify, the street is closed to all vehicles, except those with a valid permit, from 8.30 am to 9.10 am and again from 2.45 pm to 3.25 pm.

These restrictions are in place to try to ensure the safety of the children and families walking to and from school.

The police will be making routine checks and will be issuing penalties to those who are not abiding by the restrictions.

Those parents/carers who drive to school but do not qualify for a permit we have a park and stride site at the Cobblers Pub which you are welcome to use.

Thank you for your support in this matter. I am sure everyone agrees that the safety of our children is priority.

Cherry Tree Academy

Ofsted Inspection Report – January 2024



Following Cherry Tree's Ofsted Inspection in January 2024, we have shared with you Ofsted report [Cherry Tree Academy - Open - Find an Inspection Report - Ofsted](#) and summarised the strengths and Areas for Improvement (AFIs).

Strengths:

Leaders have high expectations for all pupils who attend Cherry Tree Academy. This includes pupils with special educational needs and/or disabilities (SEND).	Since the last inspection, the school has experienced some turbulence in staffing. Despite this, the curriculum has been redesigned to ensure that pupils' learning builds over time.	Staff deliver the curriculum with accuracy and understanding.	Pupils at Cherry Tree Academy are safe.	They behave well in school and at breaktimes.
Bullying happens rarely. Adults sort it out immediately.	The school has invested wisely in learning resources and the learning environment. This includes step-out spaces throughout the school. These spaces support pupils to reflect on their behaviour and regulate their emotions, when needed.	The school provides a range of extra-curricular clubs. These include singing and sports clubs.	Opportunities for pupils to develop and explore their talents and interests are plentiful.	The curriculum is enhanced by educational visits. These visits are carefully considered and link to the curriculum well.
The school ensures that all pupils become readers. Pupils read in school every day.	Reading sessions are delivered by highly skilled adults. They model the sounds that make up words precisely. This supports pupils' phonics development.	The books pupils take home to read with their parents and carers are well matched to their ability. This helps to develop pupils' accuracy and fluency when reading.	Adults identify when pupils fall behind. The school provides additional phonics sessions, which enable these pupils to catch up <u>quickly</u> .	All curriculum areas have been reviewed by the school since the last inspection.
Well-sequenced lessons build on what pupils already know. Teachers revisit pupils' prior learning at the beginning of each lesson. This supports pupils to make links in their understanding.	Pupils with SEND, with the support of practical resources such as recording frames, access the same curriculum as their peers.	Teachers check pupils' understanding during lessons. Currently, they use this information to identify gaps in pupils' knowledge and skills.	In some subjects, including reading and mathematics, the school checks on the implementation of the curriculum. It uses this information to make changes to the curriculum when needed. The curriculum is effective in these subjects.	Early years is a strength of the school. The provision is carefully planned.

Cherry Tree Academy

Ofsted Inspection Report – January 2024



Activities encourage the children to practise and rehearse their learning.	Children's understanding is reinforced well. Adults' subject knowledge is thorough.	They have an accurate understanding of the next steps needed for children's development.	They have an accurate understanding of the next steps needed for children's development.	Adults use this understanding very well during their interactions with children.
Language is modelled at every opportunity.	This extends children's understanding and the range of vocabulary they use.	The school has implemented a range of initiatives to improve pupils' attendance.	Pupils are taught how to stay safe online.	They are aware of the risks that they may face outside school.
The school welcomes external visitors to support its delivery of the curriculum.	This work aids pupils' understanding, including their understanding of road safety.	The school ensures that pupils are accepting and tolerant of others' differences.	Pupils talk with confidence and clarity about the importance of tolerance in today's multi-cultural society.	The school has made a number of changes recently, including to the curriculum and its approach to managing behaviour.
Staff are positive about these developments.	They are well supported through training and professional development.	Staff take pride in their work.	The school is considerate and aware of the workload and wellbeing of staff.	The local governing body has been strengthened by the appointment of new governors.

Cherry Tree Academy

Ofsted Inspection Report – January 2024



<p>Governors provide regular support and challenge. They have assisted the school in identifying areas of its work that require further development.</p>	<p>The governors report regularly to Waterton Waterton Academy Trust board.</p>	<p>The trust deploys resources and staff accordingly.</p>	<p>The arrangements for safeguarding are effective.</p>	
--	--	---	---	--

Areas for Improvement:

<p>In some curriculum areas, this work is very recent and its impact is not measurable.</p>	<p>However, pupils in key stage 2 have too many existing gaps in their knowledge and understanding.</p>	<p>These gaps are not being addressed quickly enough. These pupils are not as well prepared as they should be for their next stage of education.</p>	<p>The curriculum is less effective in the subjects that the school has not checked. In these subjects, inconsistencies are not addressed and pupils are not learning as much as they should be.</p>	<p>The school has implemented a range of initiatives to improve pupils' attendance. These are not having enough impact.</p>
<p>Some pupils do not attend school regularly enough.</p>	<p>These pupils miss valuable learning. They have gaps in their knowledge and understanding. These pupils fall behind their classmates in school.</p>	<p>Too many pupils do not attend school regularly and too many are persistently absent. These pupils miss essential learning and fall behind their peers.</p>	<p>The school should develop its work with parents further to ensure that these pupils attend school more often and on time.</p>	<p>The school has not checked on the impact of some curriculum initiatives.</p>
<p>The success of these initiatives is unknown.</p>	<p>The school should ensure that systems are put in place to check whether its ambitious vision is being realised across the curriculum.</p>	<p>Some older pupils have gaps in their knowledge and understanding.</p>	<p>These pupils are not achieving as well as they should.</p>	<p>The school must address the gaps in older pupils' knowledge quickly to ensure that they are ready for the demands of secondary schooling.</p>

Clive House
70 Petty France
London
SW1H 9EX

T 0300 123 1231
Textphone 0161 618 8524
enquiries@ofsted.gov.uk
www.gov.uk/ofsted



Sir Martyn Oliver
His Majesty's Chief Inspector

9 April 2024

Mr Adam Dawson
Headteacher
Cherry Tree Academy
Cobblers Lane
Pontefract
West Yorkshire
WF8 2HN

Our ref: 503795

Dear Mr Dawson

Inspection of Cherry Tree Academy

I am writing following the publication of your section 5 inspection report. Although your school was judged to require improvement overall, I was pleased to see many aspects of the school were judged to be good, including leadership and management.

It is clear from the inspection report that you and your team are building an ambitious curriculum. This is already having a positive impact in some subjects, such as mathematics. It is particularly pleasing that reading is a priority and that pupils quickly learn to read well. I am also pleased to note that children in the early years have a successful start to their school life. Furthermore, it is reassuring that you and your leadership team are focused on improving the quality of education for pupils and making sure that any gaps in pupils' learning are filled.

I know that you and your team will continue this good work. I hope this will be reflected in your next inspection outcome, probably in two years' time or so.

In the meantime, I have asked Katrina Gueli HMI, Regional Director for the North East, Yorkshire and Humber, and her Senior HMI to be available if you wish to discuss your progress.

Yours sincerely

A handwritten signature in black ink that reads "Martyn".

Sir Martyn Oliver
His Majesty's Chief Inspector



School Crossing Patrol needed here

Why not join Wakefield Council's School Crossing Patrol Team?

- Work approx 1 hour per day, during term-time to earn some extra money
- Be a valued member of your community
- Support children on their journey to and from school
- Full training and uniform supplied
- No experience necessary

Interested?

For further information or to apply, scan the QR code or call 01924 305721

Scan me





 wakefieldcouncil

Want to support our school?



How It Works

-  When you buy any book from [LoveReading.co.uk](https://www.LoveReading.co.uk) or [LoveReading4Kids.co.uk](https://www.LoveReading4Kids.co.uk), 25% of the cover price is donated to schools, to spend on books.
-  When you purchase a book, at checkout you can choose our school name for the donation to be allocated to, and our school can then purchase books with the funds.

Buy books, change lives